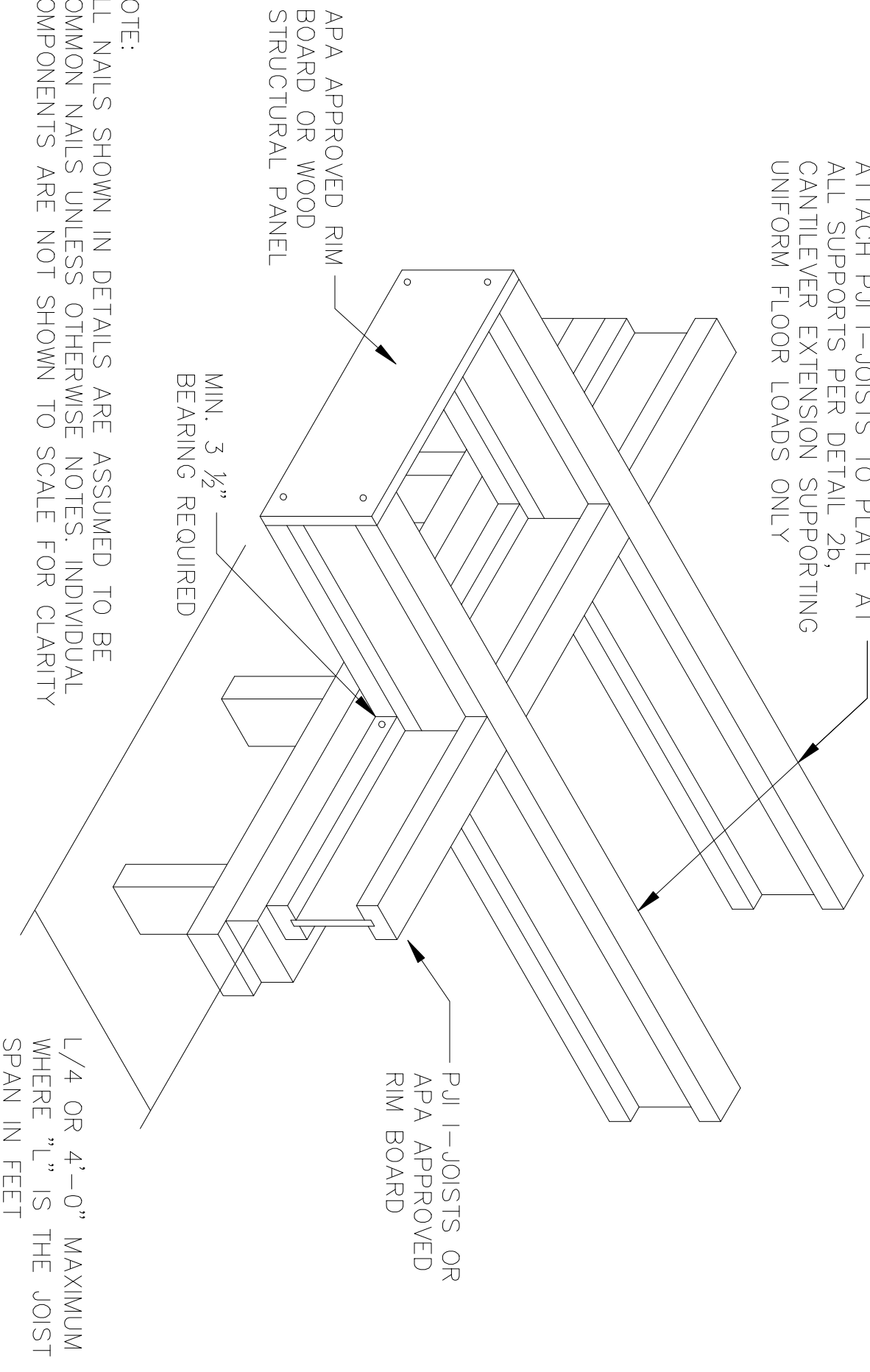


CANTILEVERED DETAIL FOR BALCONIES (NO WALL LOAD)

ATTACH PJI I-JOISTS TO PLATE AT
ALL SUPPORTS PER DETAIL 2b,
CANTILEVER EXTENSION SUPPORTING
UNIFORM FLOOR LOADS ONLY



NOTE:
ALL NAILS SHOWN IN DETAILS ARE ASSUMED TO BE COMMON NAILS UNLESS OTHERWISE NOTES. INDIVIDUAL COMPONENTS ARE NOT SHOWN TO SCALE FOR CLARITY

CAUTION:
CANTILEVERS FORMED THIS WAY MUST BE CAREFULLY DETAILED TO PREVENT MOISTURE INTRUSION INTO THE STRUCTURE AND POTENTIAL DECAY OF UNTREATED PJI I-JOIST EXTENSIONS