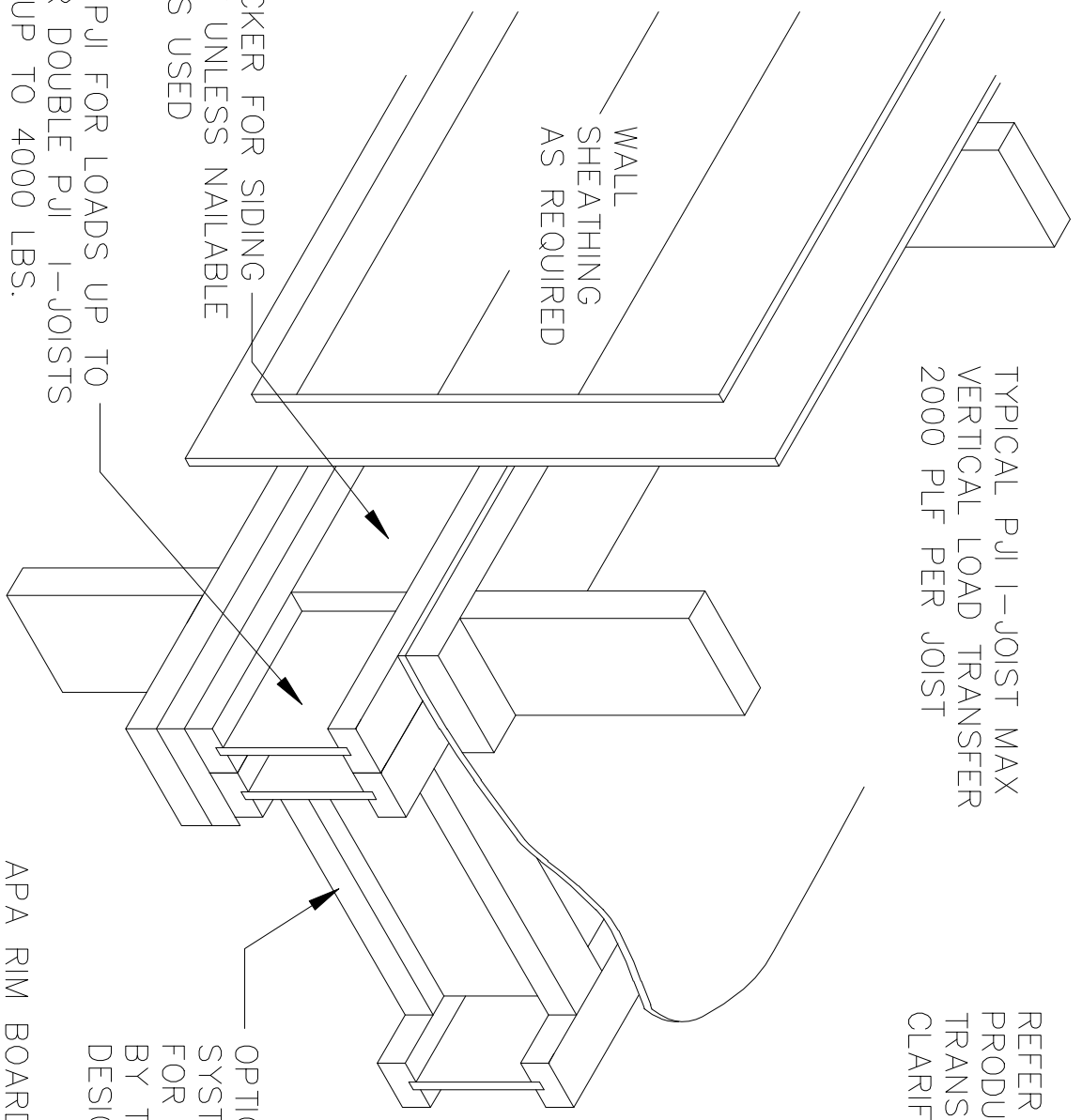


2f

TYPICAL PJI 1-JOIST MAX
VERTICAL LOAD TRANSFER
2000 PLF PER JOIST

REFER TO TABLE ON EWP
PRODUCT VERTICAL LOAD
TRANSFER CAPACITY FOR
CLARIFICATION



PROVIDE BACKER FOR SIDING
ATTACHMENT UNLESS NAILABLE
SHEATHING IS USED

USE SINGLE PJI FOR LOADS UP TO
2000 LS. OR DOUBLE PJI 1-JOISTS
FOR LOADS UP TO 4000 LBS.
(FILLER BLOCK NOT REQUIRED)
VERIFY VERTICAL LOAD CAPACITY TO
TRANSFER DESIGN LOADS

OPTIONAL
SYSTEM LATERL BRACING
FOR WIND AS SPECIFIED
BY THE BUILDING
DESIGNER

APA RIM BOARD MAY BE USED
IN LIEU OF PJI
BACKER NOT REQUIRED WHEN
APA RIM BOARD IS USED